

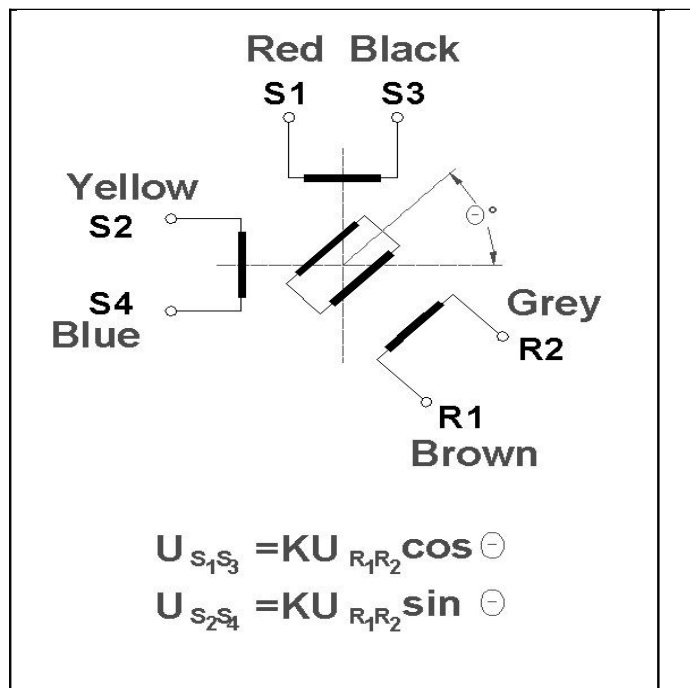
TWO - POLE RESOLVER TYPE **29. RE. (ARM -72)**



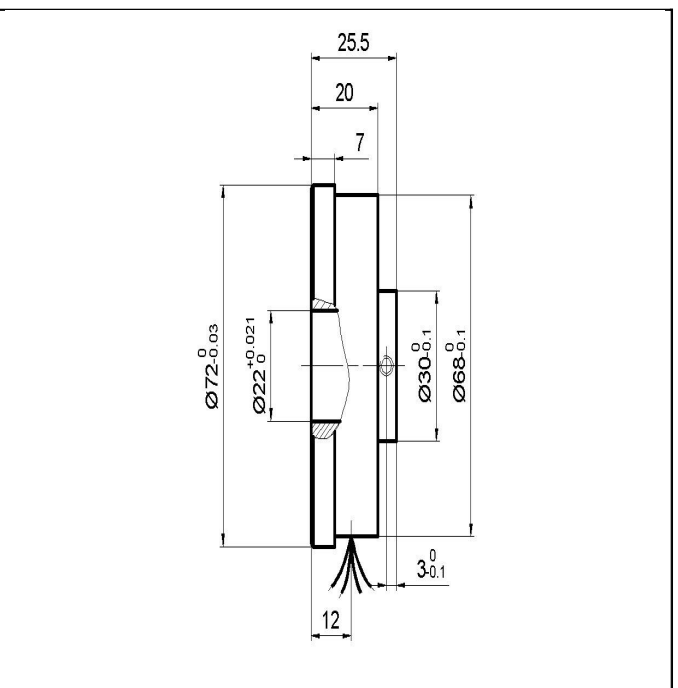
ELECTRICAL PARAMETERS:

• Supply voltage	6.6 V rms
• Frequency	7800 Hz
• No. of poles	2
• Absorbed current	max.22 mA rms
• Transformation ratio	$0.5 \pm 5\%$
• Peak to peak electrical error	max.30 min of arc
• Phase shift	$- 9^\circ \pm 4^\circ$
• Residual voltage	max. 20 mV rms
• DC resistance	
- rotor	$41 \pm 20\% \Omega$
- stator	$104 \pm 20\% \Omega$

SCHEMATIC DIAGRAM:



OVERALL DIMENSIONS:



The TWO - POLE RESOLVER TYPE is manufactured to meet the requirements of
SR EN ISO 9001/2001 ; 14001/2005

ICPE C4-Messico
 PHONE: +40 21 589 34 09;
 FAX: +40 21 346 72 90;
 e-mail: messico@icpe.ro

ICPE SA
ELECTRICAL ENGINEERING Co.
 • RESEARCH AND DEVELOPMENT
 • MANUFACTURING
 • INTERNATIONAL BUSINESS
 313 Splaiul Unirii, 030138 Bucuresti, ROMANIA
 Tel.:+40 21 5893300; Fax:+40 21 5893434; e-mail:icpe.sa@icpe.ro; http://www.icpe.ro

