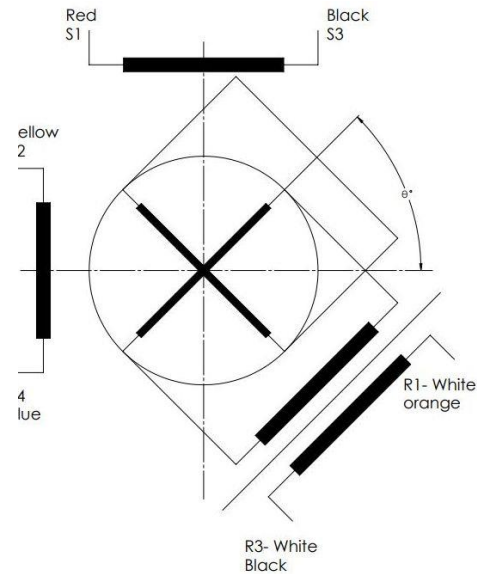
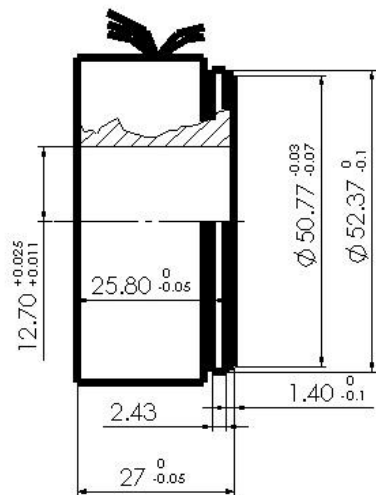




# Brushless Resolver - type: 21-RX-50-2-05



TECHNICAL FEATURES:		
Parameter	Symbol	Value
Supply voltage	V	4.0 ± 0.2
Frequency	KHz	5.0 ± 0.1
Input current	mA	50 max.
Transformation ratio	-	0.5 ± 10%
Electrical Error	min. arc	± 20 max.
Null voltage	mV	20 max
Phase Shift	Degree	7 max
Primary		Rotor
Speed		One
Weight	g	210 ± 5%

Leads AWG 24 teflon coated; 300 mm minimum length.  
 Insulation resistance @ 250 V D.C., min 100 MΩ.  
 All measurements are made at 25 °C ambient temperature.  
 Mounting dimensions and color of wires can be changed in conformity with customer requirement.

icpe S.A. [www.icpe.ro](http://www.icpe.ro) e-mail: [office@icpe.ro](mailto:office@icpe.ro)  
 phone: +40 21 589 33 00 fax: +40 21 589 34 34  
 icpe C4 –messico [www.icpe.ro/messico](http://www.icpe.ro/messico) e-mail: [messico@icpe.ro](mailto:messico@icpe.ro)  
 phone: +40 21 589 34 09 fax: +40 21 346 72 90

