



Slotless ironless axial flux permanent magnet servomotor MSFPPF

Characteristics

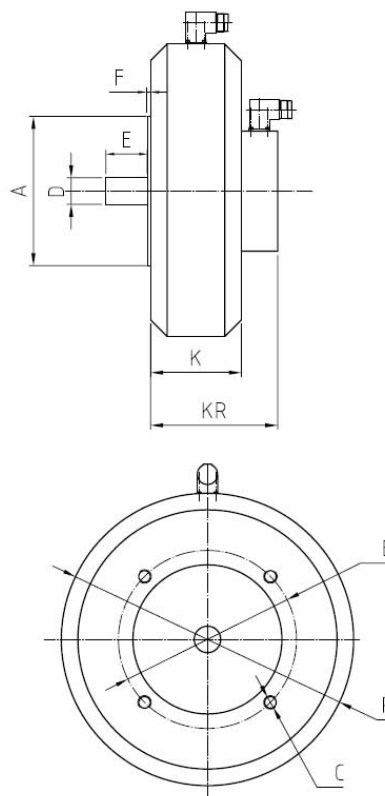
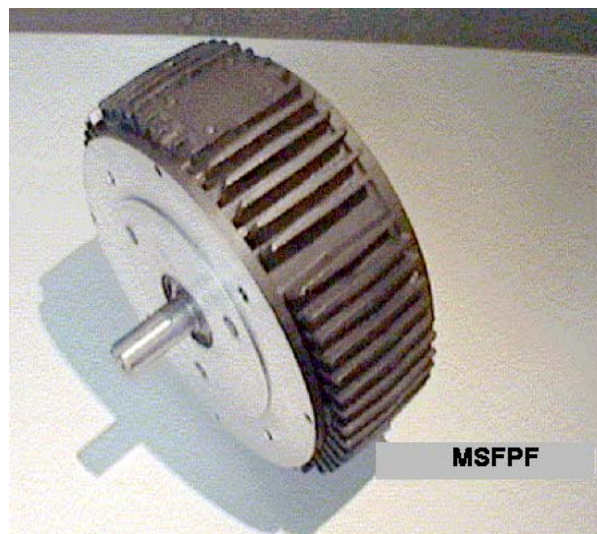
- Nd-Fe-B permanent magnets
- F insulation class
- Standard sensor: resolver
- Temperature sensor PTC
- Protection standard IP55

Advantages

- Ironless
- No cogging torque
- Lo noise and vibrations
- High performances at low speed and high speed
- Efficiency bigger than 90%
- Current proportional with current
- Maximum torque ten times static torque

Options

- Shaft key DIN 6885
- Permanent magnet fail safe brake 24 VDC
- Simmering on shaft
- Encoder sensor
- Protection standard IP 65
- Custom supply voltages
- Custom flange



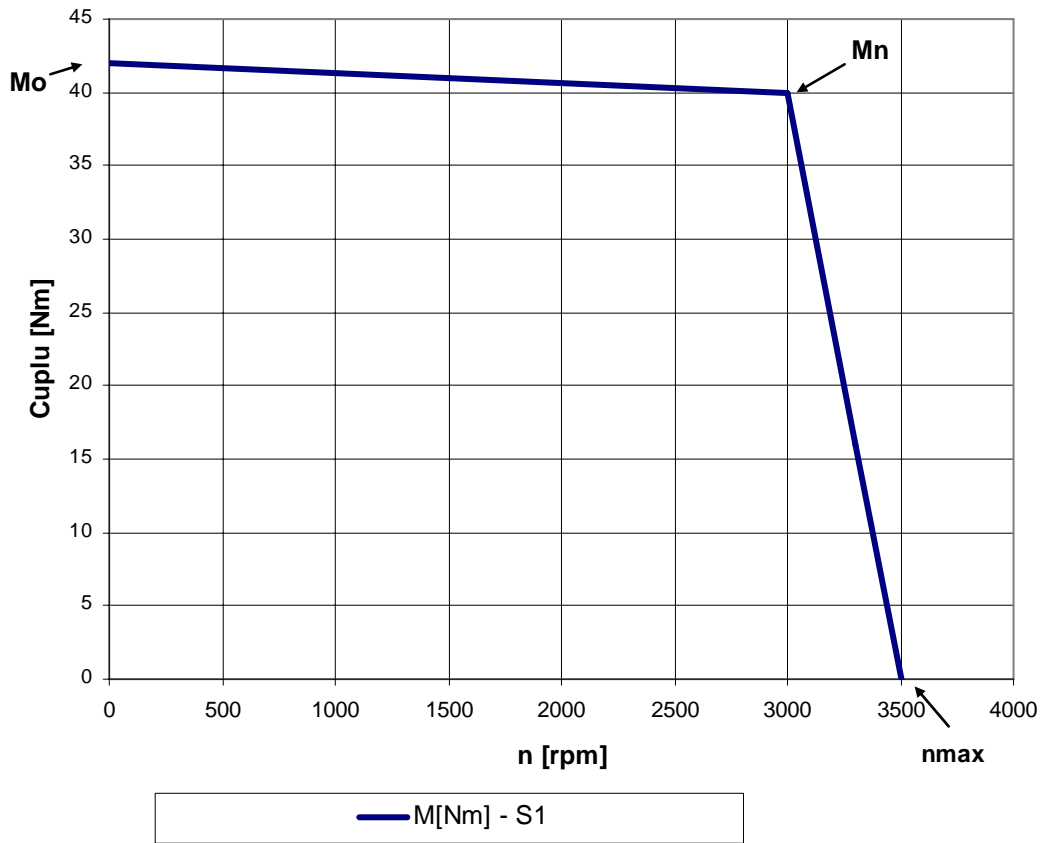
Type	A J6	B	C	D k6	E	F	K	KR	P
Z	10	215	M14	32	50	4	110	144	353

Dimensions in mm

Motor type	Dim.	P _N (kW)	M _N (Nm)	M ₀ [Nm]	M _{om} [Nm]	I _n [A]	I _o [A]	J [kgm ²]	R[Ω]	L[mH]	k _E [V]	k _T [Nm/A]
MSFPPF 40	Z	12	40	42	420	35	37	0,18	0,01	0,2	67	1,14

Nominal speed : 3000 rpm

Torque versus speed



n_N - nominal speed

P_N - Nominal power

M_N - Nominal Torque

M_o - Static torque

M_{max} - Maximum static torque

I_N - Nominal current

I_o - Static current

J - Moment of inertia

m - weight w/o brake

R - Line resistance (25°C)

L - Line inductivity

k_E - Electromotive voltage [V] at 1000 rpm

k_T - Torque constant