

# WATER COOLED BRUSHLESS SERVOMOTOR TYPE BSMW2400-6

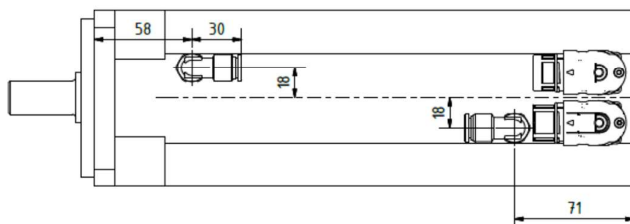
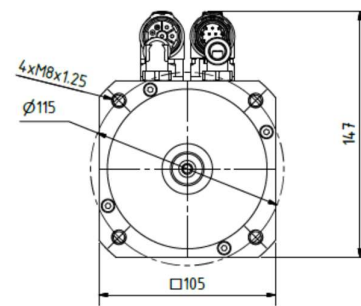
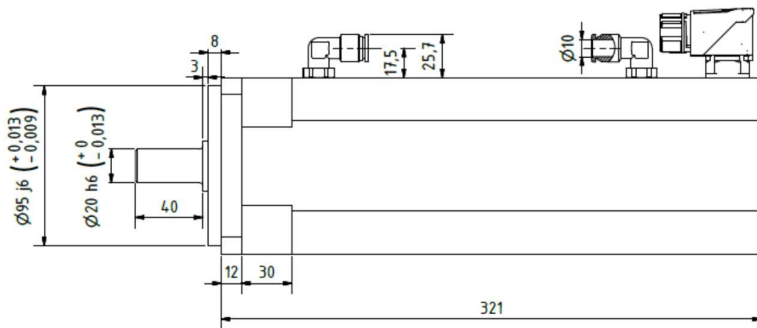


The BSMW2400-6 motor is a brushless synchronous water cooled motor with rare earth permanent magnets.

With its compact design, low inertia, high power density to weight ratio and high efficiency it is the best solution for applications that require high performance combined with space limitation.

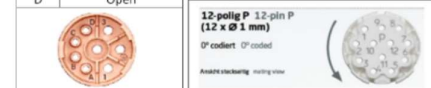
## FEATURES

- > compact construction
- > high power density
- > low inertia
- > high peak torque



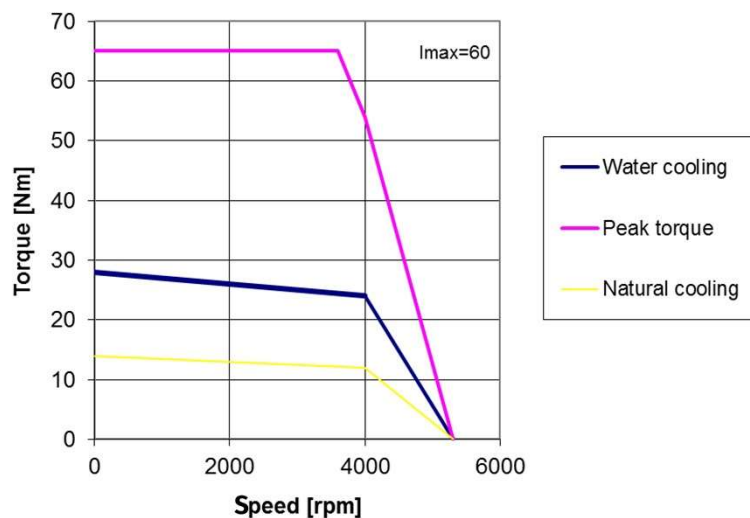
Power connector	
Pin	Signal
1	Phase R
2	Ground
3	Phase S
4	Phase T
A	PT1000
B	PT1000
C	Open
D	Open

Resolver connector	
Pin	Signal
1	Sin+
2	Sin-
3	Cos+
4	Cos-
5	Open
6	Open
7	Carrier -
8	Carrier +
9	Open
10	Open
11	Open
12	Open



Parameter	Symbol	Units	Value
Nominal power	$P_n$	W	10000
Nominal torque	$M_n$	Nm	24
Maximum torque	$M_{max}$	Nm	65
Nominal speed	$n_n$	rpm	4000
Voltage	$U_{DC}$	V	565
Nominal current	$I_n$	$A_{rms}$	22.3
Torque constant	$K_T$	$Nm/A_{rms}$	1,075
Back EMF constant	$K_E$	$V_{rms}/krpm$	65
No-load speed	$n_o$	rpm	5300
Number of poles	$N_p$		6
Line-to-line resistance	$R_L$	$\Omega$	0,6
Line-to-line inductance	$L_L$	mH	2,8
Electric time constant	$T_E$	msec	4,7
Insulation class			F
Thermal resistance	$T_R$	$^{\circ}C/W$	0,1
Inertia	$J$	$kg \cdot cm^2$	5
Weight	$W_t$	kg	19

Size [mm]	A J6	B	C	D k6	E	F	H	K	K1	M	O	P	R	S1	S2	T1	T2 h9	U h9	U1
2.4	95	115	9	19	40	3	106	332	-	105	12	135	M6.15	39	39	15,5	6	6	30



## APPLICATIONS

- > SERVO-SYSTEMS
- > DRIVE TRAINS FOR EV APPLICATIONS
- > FACTORY AUTOMATION
- > ROBOTS
- > VELOCITY AND POSITIONING APPLICATIONS
- > MACHINE TOOLS
- > MINING EQUIPMENT

