



# ELECTRICAL ENGINEERING Co.

- RESEARCH AND DEVELOPMENT
- MANUFACTURING
- INTERNATIONAL BUSINESS

313 Splaiul Unirii, 030138 Bucuresti, ROMANIA

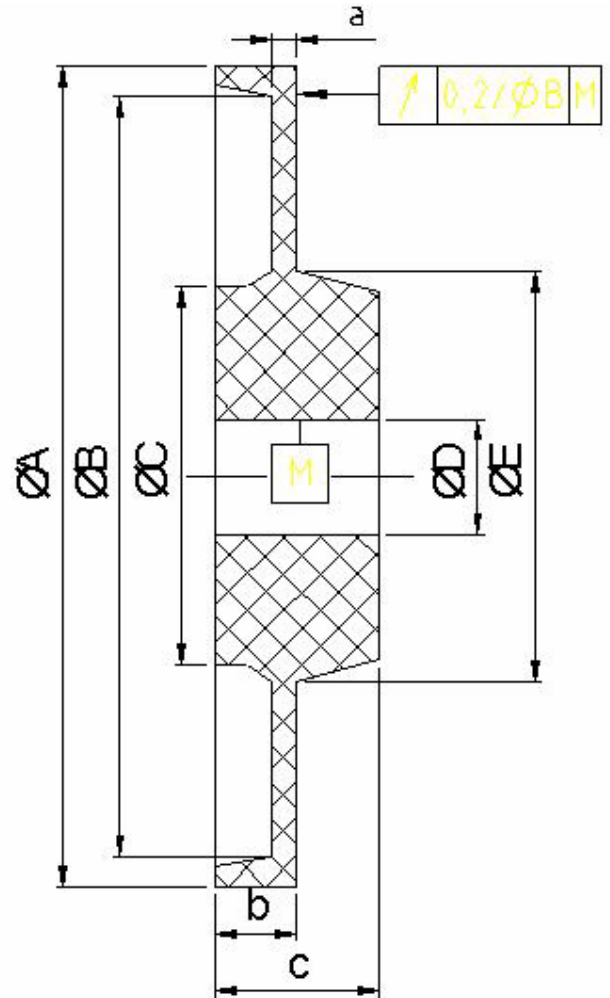
Tel.:+40 21 5893300; Fax:+40 21 5893434; e-mail:icpe.sa@icpe.ro; <http://www.icpe.ro>



QUALITY-ENVIRONMENT INTEGRATE SYSTEM



## Rotors for coreless axial field DC Motors



## Technical characteristics

<b>Rotor Type</b>	<b>MS 4</b>	<b>MS 6</b>	<b>MS 12</b>	<b>MS 35/45</b>
ØA	131,5	149	218	242
ØB	120	140	202	224
ØC	57	68,2	107	109
ØDH7	17	17	30	35
ØE	61,5	72,5	139	150
a(val.max)	2,1	2,7	3	3
b±0,2	12	10,5	10,5	12
c±0,2	21,5	20	37	46

- ***The product is developed, tested and manufactured by ICPE SA***
- **Manufacturing in integrated quality-environment assurance system according to:**

SR EN ISO 9001:2001 and SR EN ISO 14001:2005

**Contact: tel. 021 3467233 fax 021 3467233 e-mail [info03@icpe.ro](mailto:info03@icpe.ro) , Paul Minciunescu, PhD**