



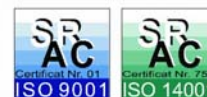
ELECTRICAL ENGINEERING Co.

• RESEARCH AND DEVELOPMENT
• MANUFACTURING
• INTERNATIONAL BUSINESS

313 Splaiul Unirii, 030138 Bucuresti, ROMANIA
Tel.:+40 21 5893300; Fax:+40 21 5893434; e-mail:icpe.sa@icpe.ro; http://www.icpe.ro



QUALITY-ENVIRONMENT INTEGRATE SYSTEM



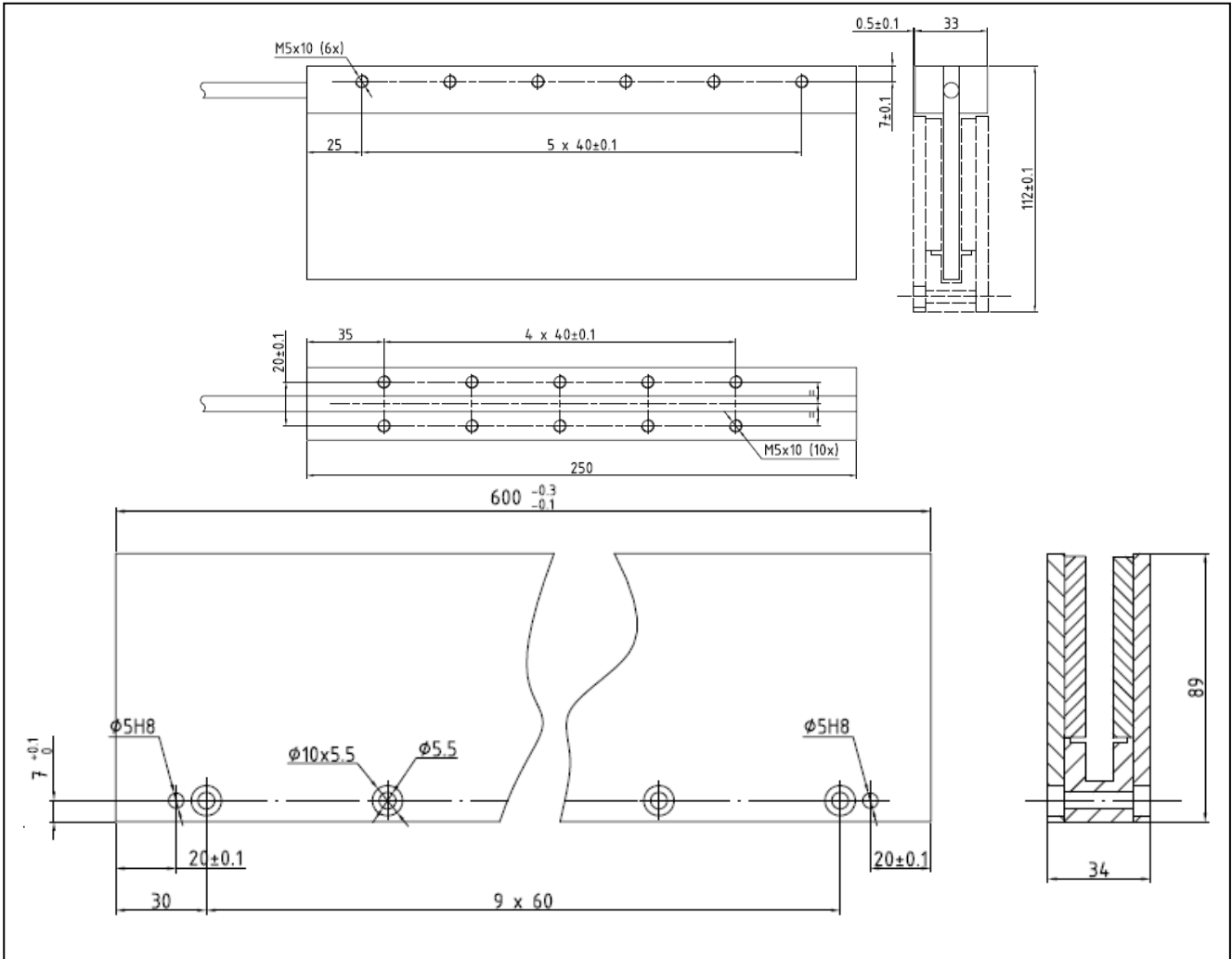
LINEAR SYNCHRONOUS MOTOR TYPE CLM 34 - 112 - 125

The motor has two parts. One moving part is the three-phase windings without iron. The second part is a balanced dual-sided "U" shaped magnet channel. There is no cogging. This allows achieving the highest levels of positioning accuracy, repeatability and resolution. The back EMF is sinusoidal.



• Continuous force F_n [N]	125
• Peak force F_p [N]	600
• Continuous power dissipation P_j [W]	100
• Motor constant K_m [N/W]	12,5
• Force constant K_f [N/A]	73,2
• Back EMF constant per line K_u [Vrms/(m/s)]	42
• Electrical resistance (line to line) at 20°C R [Ω]	15,5
• Electrical inductance (line to line) L [mH]	19
• Continuous current I_n [Arms]	1,76
• Peak current I_p [Arms]	9
• Insulation class	F
• Weight of the coil assembly [kg]	0,8
• Weight of the magnet assembly [kg/m]	16,5

- Travel [mm] 300
- Natural cooling
- Maximum humidity 20 - 80%
- Ambient temperature 0 - 40 °C
- Two pole pitch 60 mm



The product is developed, tested and manufactured by ICPE SA

**Manufacturing in integrated quality-environment assurance system according to:
SR EN ISO 9001:2001 and SR EN ISO 14001:2005.**

Contact: ICPE SA, Centrul Servomotoare, tel/fax: 021-3467233, e-mail: servo@icpe.ro