



ELECTRICAL ENGINEERING Co.

- RESEARCH AND DEVELOPMENT
- MANUFACTURING
- INTERNATIONAL BUSINESS

313 Splaiul Unirii, 030138 Bucuresti, ROMANIA

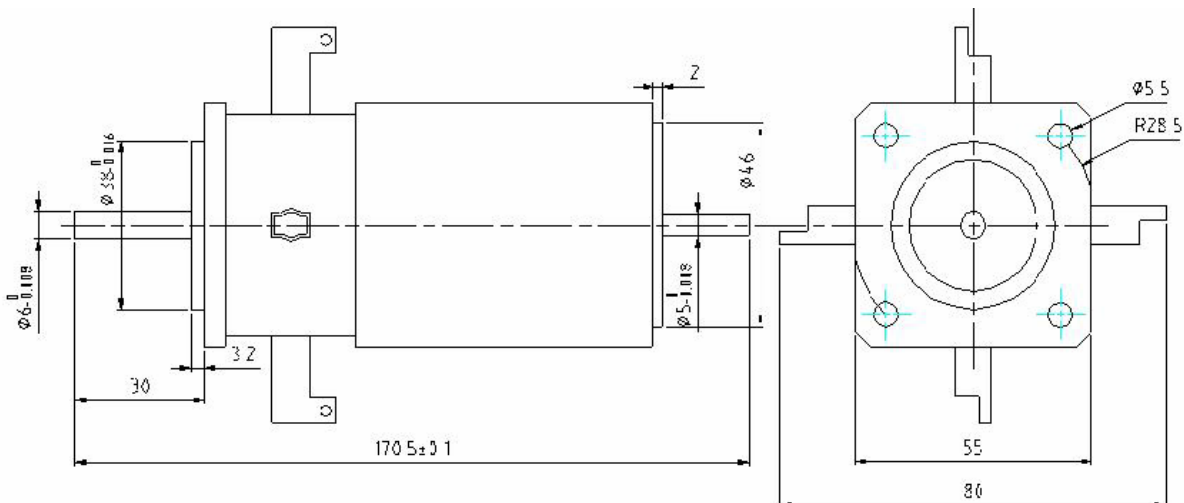
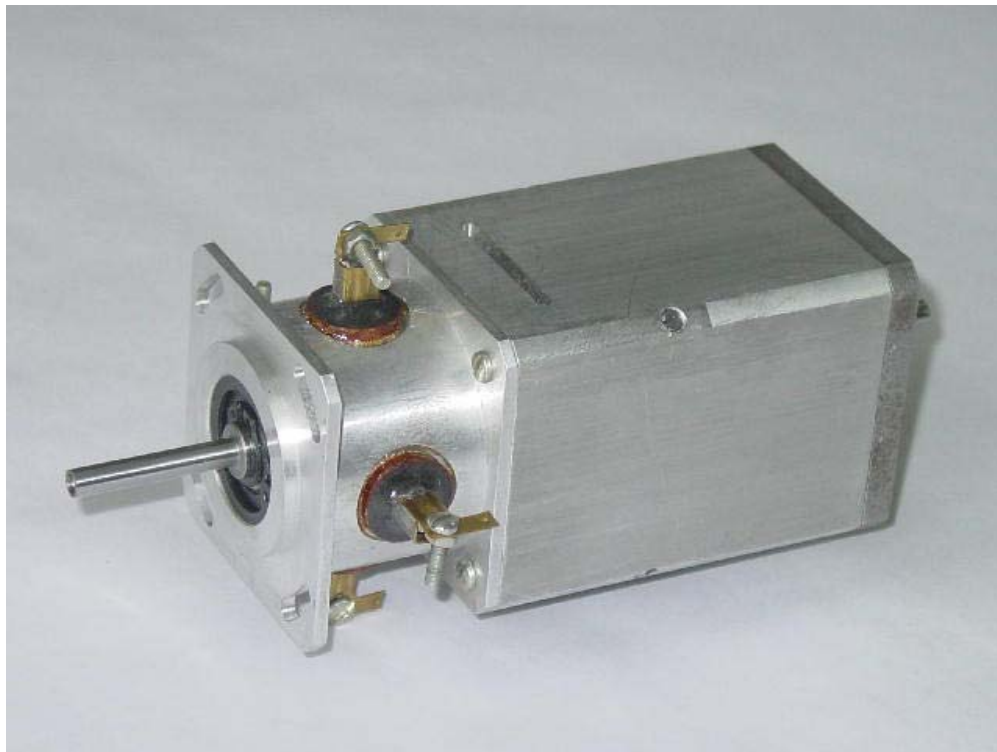
Tel.:+40 21 5893300; Fax:+40 21 5893434; e-mail:icpe.sa@icpe.ro; <http://www.icpe.ro>



QUALITY-ENVIRONMENT INTEGRATE SYSTEM



Coreless Cylindrical DC servomotors with rare earth permanent magnets



No	Parameter	Symbol unit	U.M.	Value
1.	Continuous nominal torque	Md	Nm	0,22
2.	Nominal current $\pm 5\%$	Id	A	4,5
3.	Nominal speed	n _n	rot/min	3000
4.	Nominal voltage $\pm 10\%$	Un	V	26,5
5.	EMF at 1000 rot/min $\pm 10\%$	KE	V	7
6.	Torque constant $\pm 10\%$	KT	Nm/A	0,053
7.	Resistance $\pm 10\%$	R		1,7
8.	Inductivity (val. max)	L	mH	0,221
9.	Stall torque (val. min.)	M _{tbl}	Nm	0,2
10.	Maximum current	I _{imp}	A	25
11.	Inertia (val. max)	J	kgm ² $\times 10^{-6}$	6,5
12.	Friction torque (val. max)	M _F	Nm	0,016
13.	Viscous damping $\pm 10\%$	K _D	Nm/1000rot/min	0,001
14.	Mechanical time constant (val. max.)	_{em}	ms	12
15.	Electrical time constant (val. max.)	_e	ms	0,13
16.	Maximum winding temperature	t	° C	110
17.	Weight	m	kg	1,3

- ***The product is developed, tested and manufactured by ICPE SA***
- **Manufacturing in integrated quality-environment assurance system according to:**

SR EN ISO 9001:2001 and SR EN ISO 14001:2005